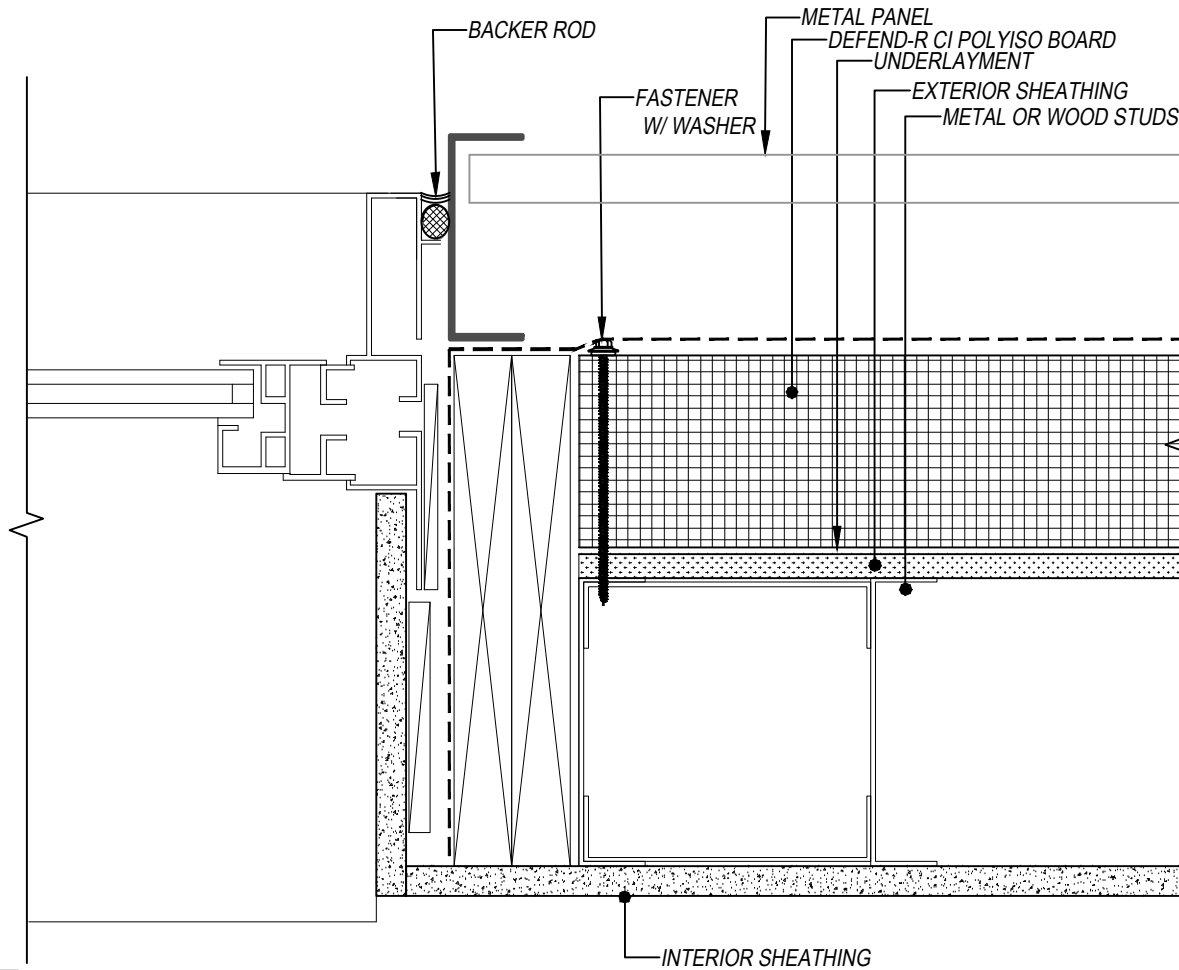
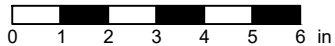


DEFEND-R CI PLY  
**PUNCHED INLINE WINDOW JAMB DETAIL**  
DEFEND-R CI POLYISO NON-COMPOSITE  
CONTINUOUS INSULATION UNDER WRB WITH SHEATHING  
EXTERIOR CLADDING NON-MASONRY



SCALE: 3" = 1'-0"



SUBJECT TO CHANGE WITHOUT NOTICE

DISCLAIMER: DETAIL SHOWN FOR ILLUSTRATION PURPOSES ONLY. ACTUAL PROJECT DETAIL MAY VARY