

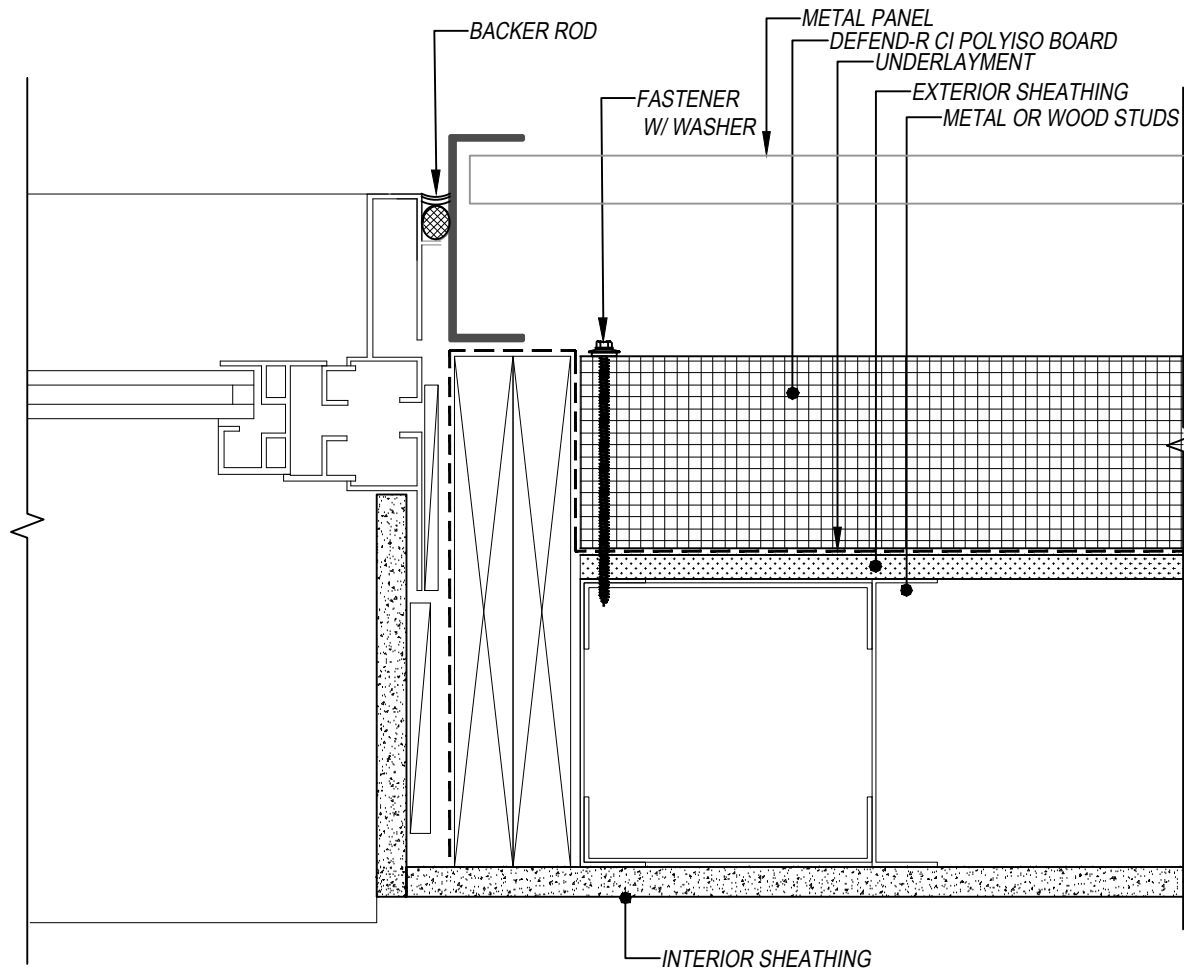
DEFEND-R CI PLY

# PUNCHED INLINE WINDOW JAMB DETAIL

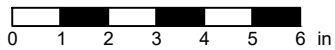
DEFEND-R CI POLYISO NON-COMPOSITE

CONTINUOUS INSULATION OVER WRB WITH SHEATHING

EXTERIOR CLADDING NON-MASONRY



SCALE: 3" = 1'-0"



SUBJECT TO CHANGE WITHOUT NOTICE

DISCLAIMER: DETAIL SHOWN FOR ILLUSTRATION PURPOSES ONLY. ACTUAL PROJECT DETAIL MAY VARY