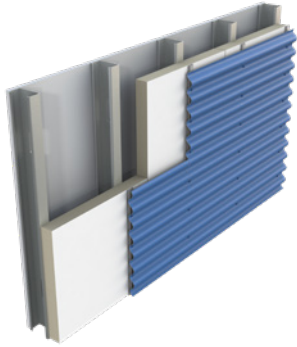


DEFEND-R CI POLYISO WALL PRODUCTS



DEFEND-R CI COATED GLASS AND COATED GLASS (CLASS A)

Insulation Manufactured On-Line to Premium Performance Coated Glass Facers

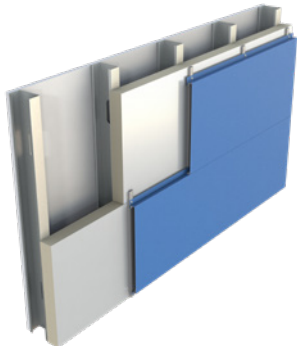
- Coated glass facer offers versatility in walls
- Can be installed directly on steel studs in a variety of wall assemblies without the need for gypsum sheathing
- Available thicknesses 1" - 4"
- R-values 6.0 - 25.0



DEFEND-R CI PLY AND PLY (CLASS A)

Insulation Bonded to Fire Treated Plywood

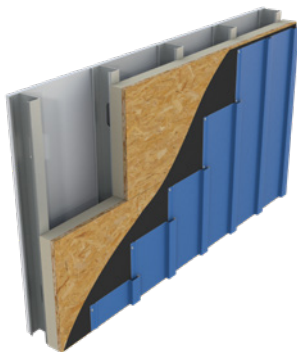
- Can be installed directly to steel studs or wood framing without the need for gypsum sheathing
- Optimal substrate for mechanically attaching cladding materials
- Available thicknesses 1.6" - 4.7"
- R-values 6.8 - 26.0



DEFEND-R CI FOIL AND FOIL (CLASS A)

Insulation Manufactured On-Line to Foil Facers

- Reflective foil faced material offers maximum energy efficiency/R-value
- Excels in masonry cavity wall applications
- Available thicknesses 1" - 4"
- R-values 6.5 - 27.0 (Foil)
- R-values 6.3 - 25.2 (Foil Class A)



DEFEND-R CI NAIL BASE

Insulation Bonded to OSB or Plywood

- Wood composite material designed for use in residential and Type V commercial applications
- Optimal substrate for mechanically attaching cladding materials
- Thicknesses 1.5" - 4.5", R-values 6.6 - 25.6 (OSB)
- Thicknesses 1.6" - 4.6", R-values 6.8 - 25.8 (ply)

