

INSULATION PRODUCT BROCHURE

Defend-R and Defend-R CI



BEHIND THE FACADE

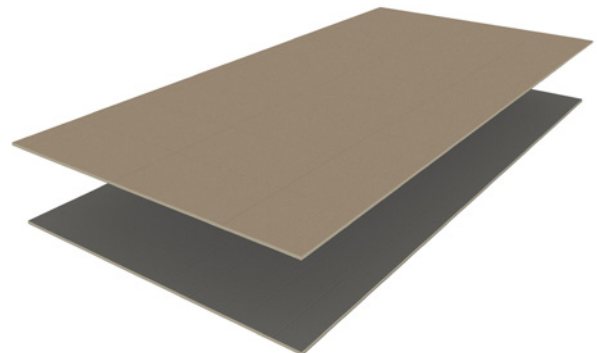
From custom-finished metal to profile-specific clips and screws, Drexel Metals offers a complete system. Rounding out the system is our line of wall and roof insulation products. Drexel Metals' Defend-R rigid roof insulation panels are composed of a closed-cell polyisocyanurate foam core manufactured on- and off-line to various facer types. The Defend-R CI line consists of rigid wall insulation panels also composed of a closed-cell polyisocyanurate foam core manufactured to various facer types in both standard and Class A variants.

ROOFING PRODUCTS

DEFEND-R

Flat Insulation with Fiber Reinforced Facer

- Highest Recycled Content
- Manufactured using ReadyFlash® Technology, with light and dark sides to allow for faster or slower adhesive flash-off times in Single-Ply Fully Adhered systems.
- Available in 4' x 4' and 4' x 8' and in 20 or 25 PSI
- Available thicknesses 1" - 4.5"
- R-values 5.7 - 26.8

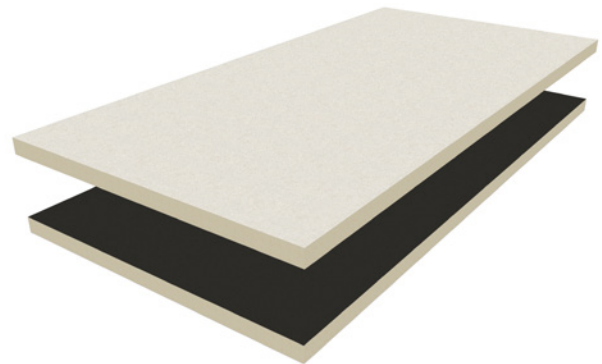


ReadyFlash
TECHNOLOGY

DEFEND-R COATED GLASS

Flat Insulation with Premium Performance Facer

- Increased moisture resistance and dimensionally stability
- Manufactured using ReadyFlash® Technology, with light and dark sides to allow for faster or slower adhesive flash-off times in Single-Ply Fully Adhered systems.
- Available in 4' x 4' and 4' x 8' and in 20 or 25 PSI
- Available thicknesses 1" - 4.5"
- R-values 5.7 - 26.8



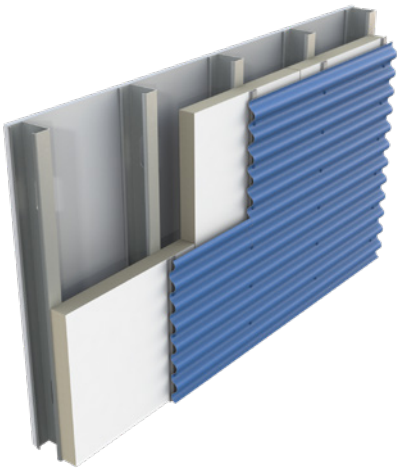
DEFEND-R NAIL BASE

Manufactured to Oriented Strand Board or Plywood

- Not a structural panel
- Manufactured on-line to OSB available in 47.5" x 47.5" or 47.5 x 95.5 sizes 1.5" - 4.1" R-value 6.3 - 21.1
- Manufactured off-line to Plywood available in 48" x 96"
- Available in 20 or 25 PSI
- Available thicknesses 1.5" - 4"
- R-values 6.3 - 21.1



WALL PRODUCTS



DEFEND-R CI COATED GLASS AND COATED GLASS (CLASS A)

Insulation Manufactured On-Line to Premium Performance Coated Glass Facers

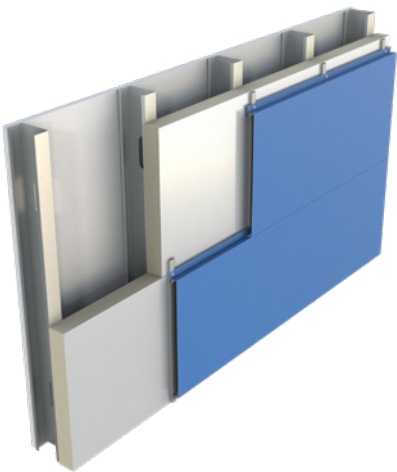
- Coated glass facer offers versatility in walls
- Can be installed directly on steel studs in a variety of wall assemblies without the need for gypsum sheathing
- Available thicknesses 1" - 4"
- R-values 6.0 - 25.0



DEFEND-R CI PLY AND PLY (CLASS A)

Insulation Bonded to Fire Treated Plywood

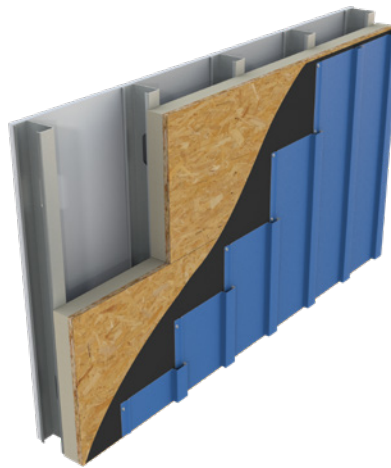
- Can be installed directly to steel studs or wood framing without the need for gypsum sheathing
- Optimal substrate for mechanically attaching cladding materials
- Available thicknesses 1.6" - 4.7"
- R-values 6.8 - 26.0



DEFEND-R CI FOIL AND FOIL (CLASS A)

Insulation Manufactured On-Line to Foil Facers

- Reflective foil faced material offers maximum energy efficiency/R-value
- Excels in masonry cavity wall applications
- Available thicknesses 1" - 4"
- R-values 6.5 - 27.0 (Foil)
- R-values 6.3 - 25.2 (Foil Class A)



DEFEND-R CI NAIL BASE

Insulation Bonded to OSB or Plywood

- Wood composite material designed for use in residential and Type V commercial applications
- Optimal substrate for mechanically attaching cladding materials
- Thicknesses 1.5" - 4.5", R-values 6.6-25.6 (OSB)
- Thicknesses 1.6" - 4.6", R-values 6.8-25.8 (ply)

COMMITMENT TO SUSTAINABILITY

Manufactured with NexGen Chemistry

- Blowing agent used has zero ozone depleting potential (ODP)
- Produced with virtually zero global warming potential (GWP)
- Manufacturing process contains no CFCs, HCFCs, or HFCs

Reduced Waste

- Defend-R and Defend-R CI polyiso is made of 9% pre-consumer recycled content
- Energy Efficient
- Polyiso insulation has increased R-value per inch when compared to mineral fiber, XPS, or EPS options

ACCESSORIES



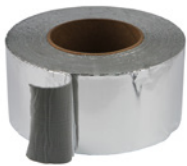
Hunter VP-SA WRB

A vapor permeable, self adhering, air and water resistive barrier.



CAV-GRIP®

Low VOC aerosol contact adhesive



Foil Grip 1402 Tape and Aluma-Grip 701 Flashing

Indoor/outdoor reflective butyl tape for board seams/joints and butyl flashing for transition areas



ECHOtape MT A7757 All Weather Aluminum Foil Tape

An indoor/outdoor acrylic tape for board seams/joints



FlexShield

A white acrylic seam/joint tape



Thermal-Grip IFS Fastener/Gun

Insulation fastening system



SIP/WD

Mechanically attached fastener for wood studs. For use with Defend-R CI Ply, Defend-R CI Ply (Class A), Defend-R Nail Base, and Defend-R CI Nail Base. No pre-drilling required.



SIP/SD and SIP/SD-PT

Mechanically attached fastener for 18 - 22 gauge steel stud, concrete, or CMU walls. Use with Defend-R CI Ply, Defend-R CI Ply (Class A), Defend-R Nail Base, or Defend-R CI Nail Base. Used to prevent panel jacking.



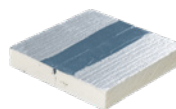
SIP/HD and SIP/HD-PT

Mechanically attached fastener for 12 - 16 gauge steel stud walls. Use with Defend-R CI Ply, Defend-R CI Ply (Class A), Defend-R Nail Base, or Defend-R CI Nail Base. Used to prevent panel jacking.



TRUFAST Walls

Thermal-Grip ci Prong Washer, Thermal-Grip Brick Tie Washer, Grip-Deck ci Screw, Plasti-Grip ci Prong Washer, Plasti-Grip® PMF Anchor



BarriBond HP

Liquid flashing and detail sealant available in 20 fl oz. sausages. Apply with trowel in one coat.

Drexel Metals
Roofing Systems + Custom Fabrication

A **CARLISLE** COMPANY