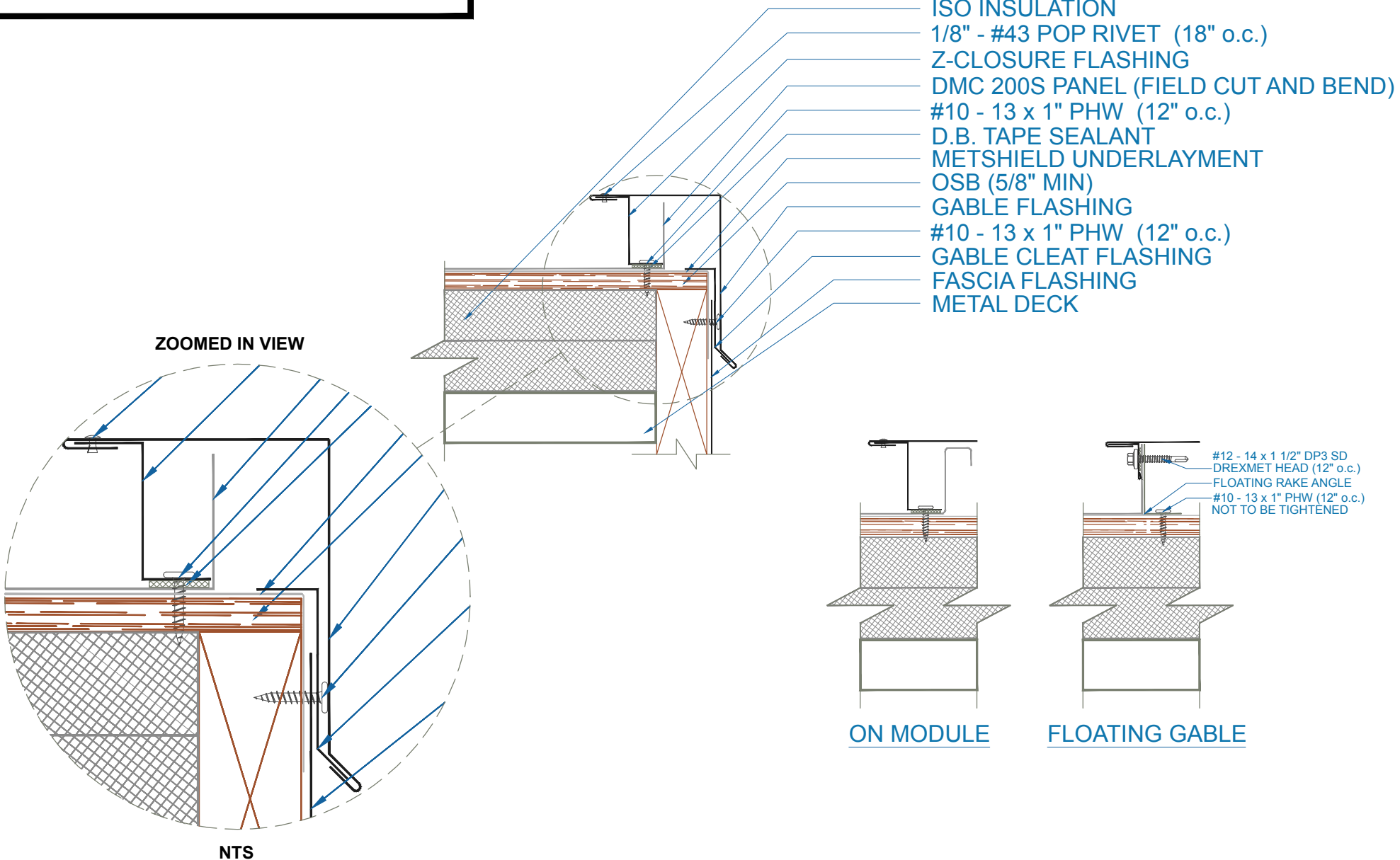


**DMC 200S - NAIL BASE/ISO/METAL DECK**



- ISO INSULATION
- 1/8" - #43 POP RIVET (18" o.c.)
- Z-CLOSURE FLASHING
- DMC 200S PANEL (FIELD CUT AND BEND)
- #10 - 13 x 1" PHW (12" o.c.)
- D.B. TAPE SEALANT
- METSHIELD UNDERLAYMENT
- OSB (5/8" MIN)
- GABLE FLASHING
- #10 - 13 x 1" PHW (12" o.c.)
- GABLE CLEAT FLASHING
- FASCIA FLASHING
- METAL DECK

- #12 - 14 x 1 1/2" DP3 SD  
DREXMET HEAD (12" o.c.)
- FLOATING RAKE ANGLE
- #10 - 13 x 1" PHW (12" o.c.)  
NOT TO BE TIGHTENED

**ON MODULE      FLOATING GABLE**

NTS

EFFECTIVE DATE: 07-24-2013  
SUBJECT TO CHANGE WITHOUT NOTICE

**GABLE**  
SCALE: 3" = 1'-0"

