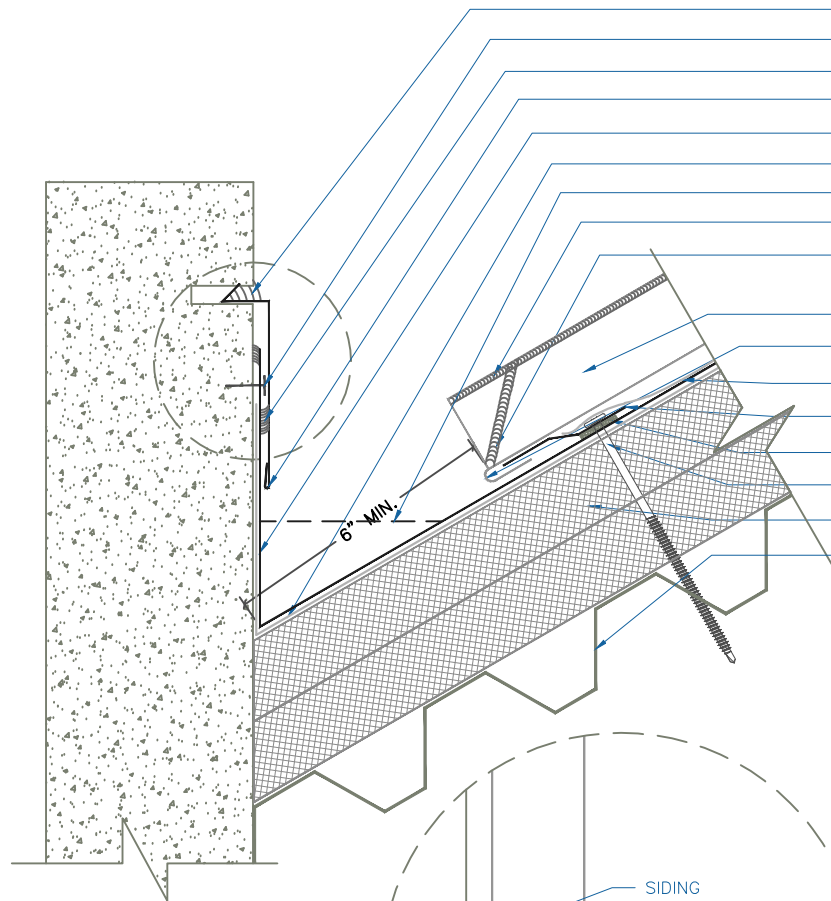
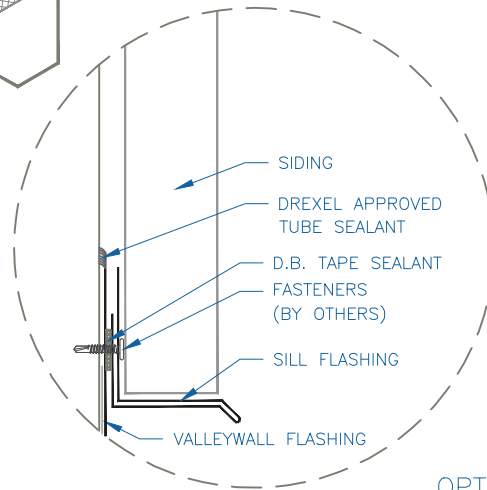


DMC 550S - ISO w/ INSULATION

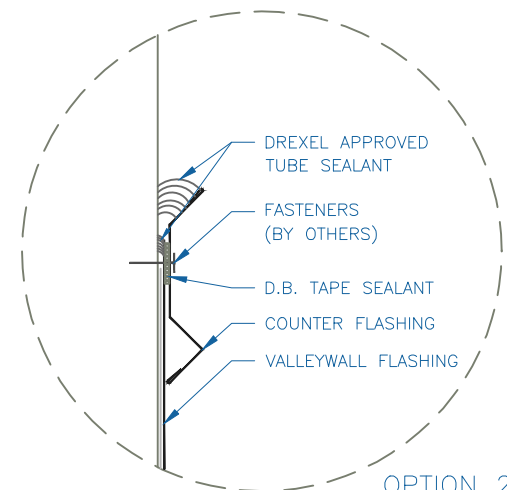
- DREXEL APPROVED TUBE SEALANT
- FASTENERS (BY OTHERS)
- DREXEL APPROVED TUBE SEALANT
- REGLET FLASHING
- VALLEYWALL FLASHING
- METSHIELD UNDERLAYMENT
- CRICKET BEYOND
- SEAM SEALANT (3'-0" UP FROM RIB END)
- DREXEL APPROVED TUBE SEALANT (FIELD APPLIED BETWEEN PANEL RIBS)
- DMC 550S PANEL
- FIELD CUT & HEM PANEL 180°
- METSHIELD UNDERLAYMENT
- OFFSET CLEAT FLASHING
- D.B. TAPE SEALANT
- #10 - 13 x ?" PHDD (12" o.c.)
- ISO INSULATION
- METAL DECK



- NOTE:
- 1.) LAPS IN VALLEYWALL ARE 12" MIN. DREXEL METALS APPROVED SEALANT IN ALL LAPS IN VALLEY. TWO ROWS OF SEALANT BETWEEN VALLEYWALL LAPS, 4" UP FROM LAP.
 - 2.) LARGE ROOF AREAS MAY REQUIRE A LARGER GAP BETWEEN PANEL AND WALL TO ALLOW FOR STORM WATER RUN OFF.



OPTION 1



OPTION 2

EFFECTIVE DATE: 02-19-2016
 SUBJECT TO CHANGE WITHOUT NOTICE

VALLEYWALL

SCALE: 3" = 1'-0"