

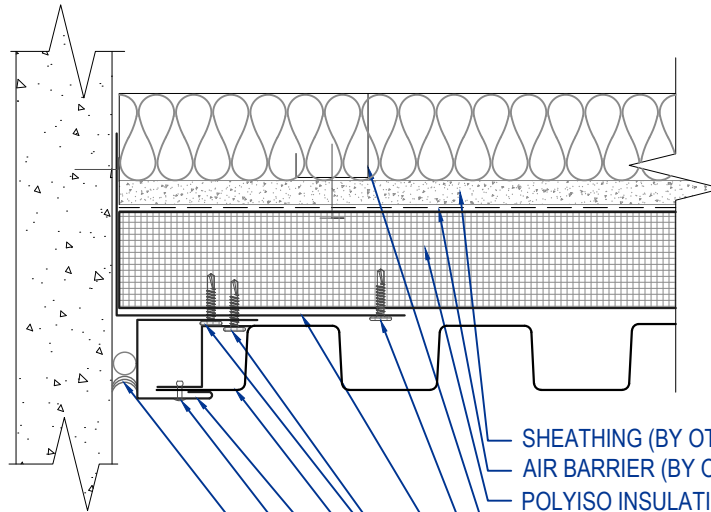
FACADE BR - Z-GIRT  
**JAMB DETAIL**  
VERTICAL APPLICATION



THIS DETAIL DRAWING IS APPLICABLE TO ALL FACADE BR SERIES WALL PANEL PROFILES



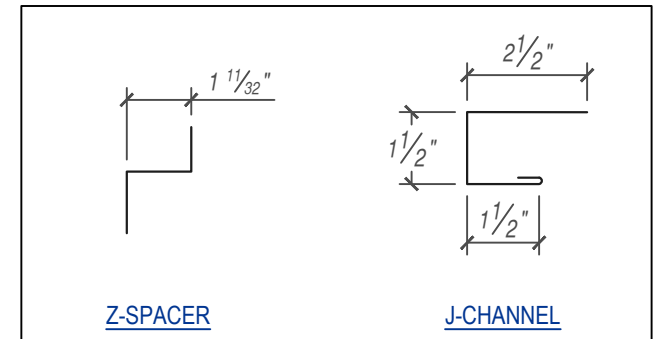
(CONCEALED CLIP OPTION)



- SHEATHING (BY OTHERS)
- AIR BARRIER (BY OTHERS)
- POLYISO INSULATION
- METAL STUD (BY OTHERS)
- #10 - 16 x 1" DP3 PHD (12"o.c.)
- 18GA SUPPORT PLATE \*  
(FASTENED @ EA. Z-GIRT)
- #10 - 16 x 1" DP3 PHD (12"o.c.)
- FACADE BR PANEL
- J-CHANNEL
- 1/8" x 3/16" POP RIVET (12" o.c.)
- DREXEL APPROVED TUBE SEALANT  
WITH BACKER ROD

**KEYNOTES:**

- TRIM FASTENERS ARE SELF-DRILL PANCAKE HEAD AND MUST BE BE INSTALLED IN A STAGGERED PATTERN
- FASTENERS MUST PENETRATE STEEL SUBSTRATE BY 5/8" MINIMUM THREAD LENGTH

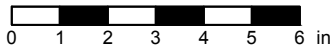


FLASHINGS

**\* NOTE:**  
MAY OMIT SUPPORT PLATE IF ATTACHING FLASHING TO STRUCTURAL MEMBER.

DISCLAIMER: DETAIL SHOWN FOR ILLUSTRATION PURPOSES ONLY. ACTUAL PROJECT DETAIL MAY VARY

SCALE: 3" = 1'-0"



EFFECTIVE DATE: 01-01-2023  
SUBJECT TO CHANGE WITHOUT NOTICE