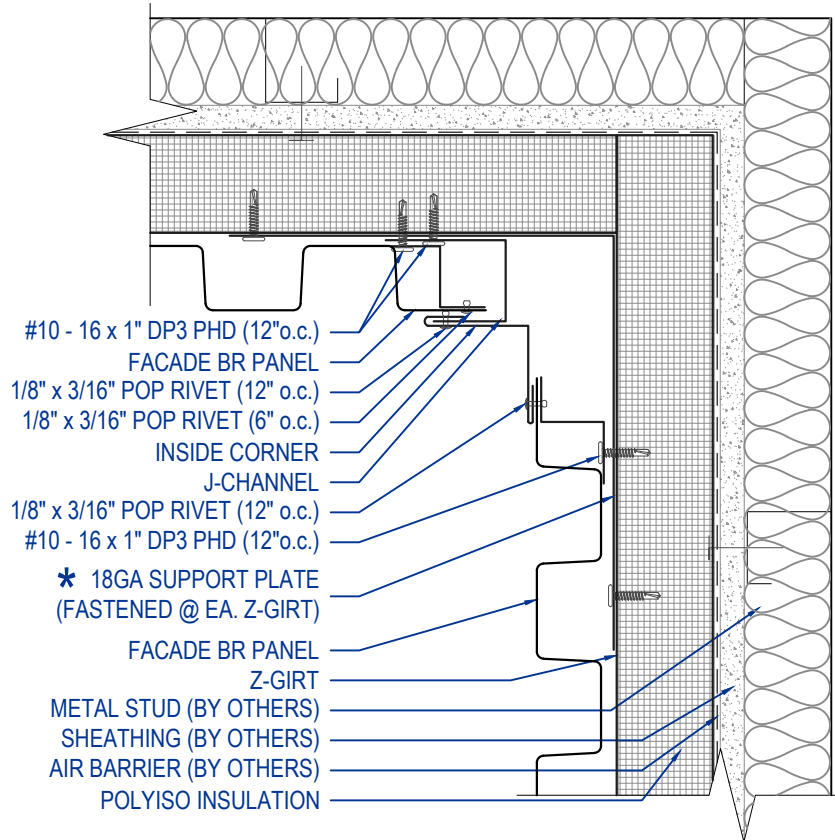
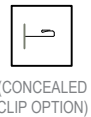


FACADE BR - Z-GIRT
INSIDE CORNER DETAIL
VERTICAL APPLICATION



THIS DETAIL DRAWING IS APPLICABLE TO ALL FACADE BR SERIES WALL PANEL PROFILES

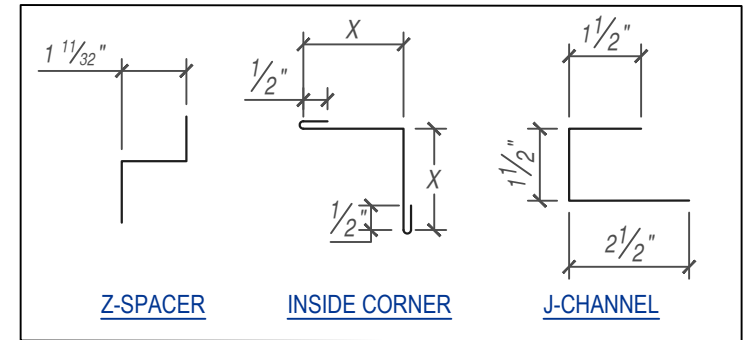


- #10 - 16 x 1" DP3 PHD (12" o.c.)
- FACADE BR PANEL
- 1/8" x 3/16" POP RIVET (12" o.c.)
- 1/8" x 3/16" POP RIVET (6" o.c.)
- INSIDE CORNER
- J-CHANNEL
- 1/8" x 3/16" POP RIVET (12" o.c.)
- #10 - 16 x 1" DP3 PHD (12" o.c.)
- * 18GA SUPPORT PLATE (FASTENED @ EA. Z-GIRT)
- FACADE BR PANEL
- Z-GIRT
- METAL STUD (BY OTHERS)
- SHEATHING (BY OTHERS)
- AIR BARRIER (BY OTHERS)
- POLYISO INSULATION

*** NOTE:**
MAY OMIT SUPPORT PLATE IF ATTACHING FLASHING TO STRUCTURAL MEMBER.

KEYNOTES:

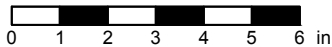
- TRIM FASTENERS ARE SELF-DRILL PANCAKE HEAD AND MUST BE BE INSTALLED IN A STAGGERED PATTERN
- FASTENERS MUST PENETRATE STEEL SUBSTRATE BY 5/8" MINIMUM THREAD LENGTH



FLASHINGS

DISCLAIMER: DETAIL SHOWN FOR ILLUSTRATION PURPOSES ONLY. ACTUAL PROJECT DETAIL MAY VARY

SCALE: 3" = 1'-0"



EFFECTIVE DATE: 01-01-2023
SUBJECT TO CHANGE WITHOUT NOTICE