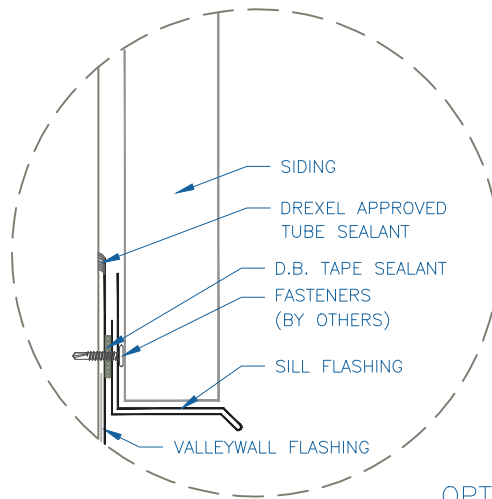
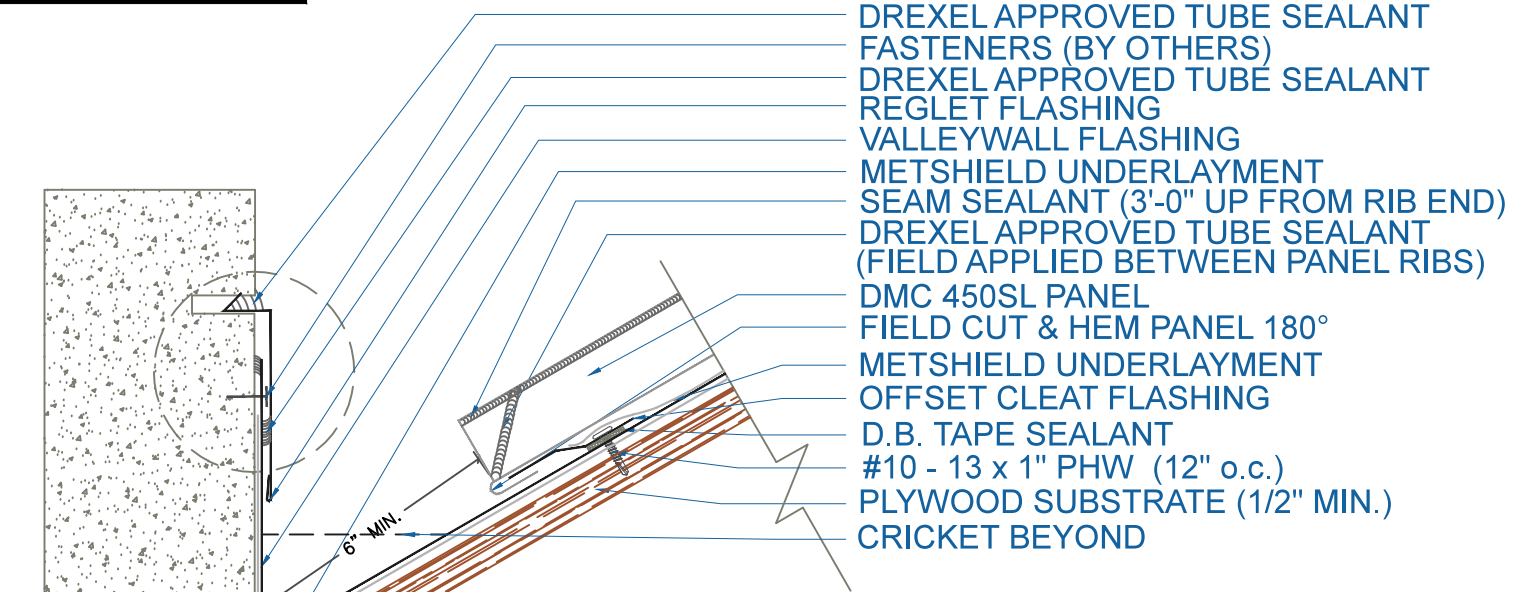


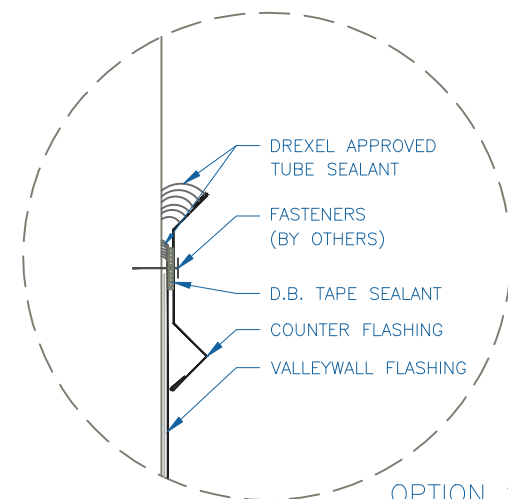
# DMC 450SL - PLYWOOD

**NOTE:**

- 1.) LAPS IN VALLEYWALL ARE 12" MIN. DREXEL METALS APPROVED SEALANT IN ALL LAPS IN VALLEY. TWO ROWS OF SEALANT BETWEEN VALLEYWALL LAPS, 4" UP FROM LAP.
- 2.) LARGE ROOF AREAS MAY REQUIRE A LARGER GAP BETWEEN PANEL AND WALL TO ALLOW FOR STORM WATER RUN OFF.



OPTION 1



OPTION 2

## VALLEYWALL

SCALE: 3" = 1'-0"

**Drexel Metals**  
Roofing Systems + Custom Fabrication



EFFECTIVE DATE: 01-06-14  
SUBJECT TO CHANGE WITHOUT NOTICE