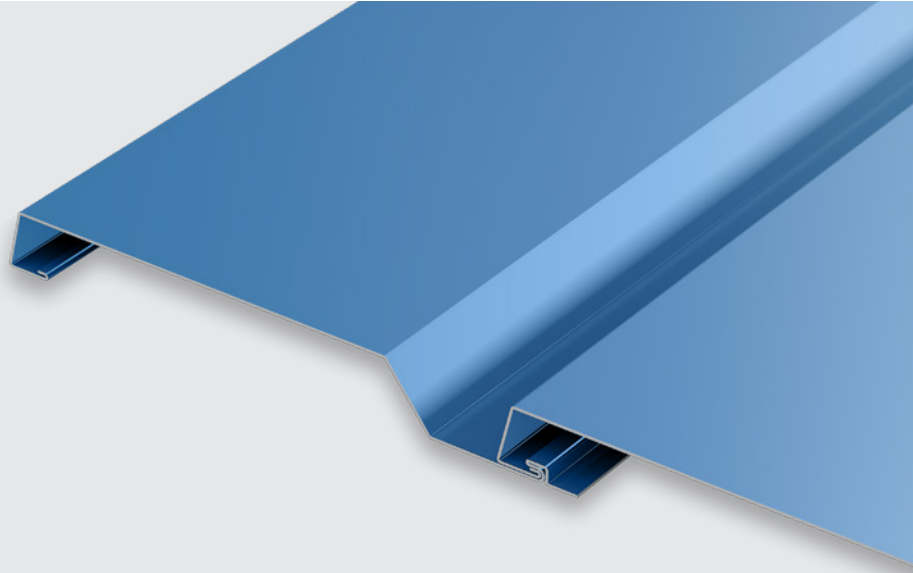


# FACADE HL-S11

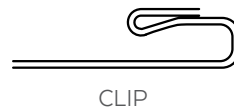
## DMC WALL SERIES



### FACADE HL-S11



AVAILABLE IN TWO FASTENING OPTIONS



CLIP



FASTENER FLANGE

### PRODUCT FEATURES

- Multiple fastening options available for expansion/contraction
- Panel depth of  $1\frac{3}{8}$ "
- Cost-effective installation
- Horizontal or vertical installation
- Panel lengths: 30' maximum for steel; 22' maximum for aluminum on the thru-fastened leg; longer lengths available on clip panels

### MATERIAL COLOR OPTIONS

- 40 stocked colors (.032 aluminum)
- 28 stocked colors (.040 aluminum)
- 35 stocked colors (.050 aluminum)
- 52 stocked colors (24 gauge steel)
- 18 stocked colors (22 gauge steel)

### TESTING

- ASTM E330
- ASTM E283
- ASTM E331
- AAMA 501.1-05-B1, B2, C2, S1
- ASTM 1592

### MATERIAL SUBSTRATES

- .032 aluminum
- .040 aluminum
- .050 aluminum
- 24 gauge steel
- 22 gauge steel

### SPECS

- 11.356" Wide
- $1\frac{3}{8}$ " High

Note: Minimum panel length is 5'