

PANEL DETAILS

AVAILABLE WIDTHS

12", 14", 16", and 18"

STANDARD PANEL WIDTHS

14", 16", and 18"

*Drexel Metals design pressures, wind uplifts and test reports are for specific deck attachments, material gauges, clip spacing and panel widths. A complete specification and listing is available online at www.drexelmetals.com

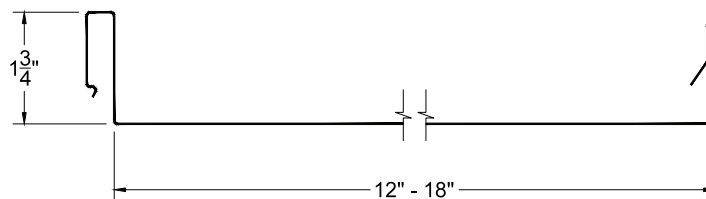
SUBSTRATES AVAILABLE

- Painted Galvalume® - 24ga and 26ga
- Drexlume™ - 24ga and 26ga
- Aluminum - .032"

IDEAL APPLICATION

RESIDENTIAL, INSTITUTIONAL & STRUCTURAL

The DMC 175S is distinctive for its broad width seam, impressive structural capabilities and easy Snap Lock installation. Featuring a 1¾" seam height, this continuous interlocking engineered roof system has a concealed fastener and clip application that allows thermal movement and requires no mechanical seaming to ensure weathertight integrity. The installation is simple and quick, yet it withstands extremely high design pressures and is approved for use on Weather Tightness Warranty projects.

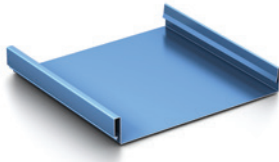


DMC 175S PROFILE

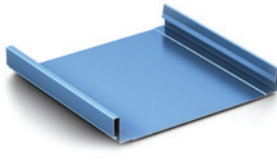
PROFILE



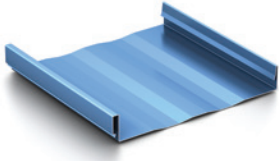
PANEL RIB OPTIONS



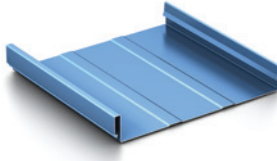
Flat Panel



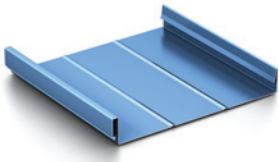
Clip Relief



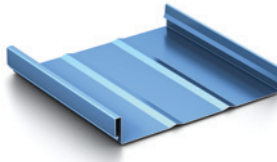
Striations



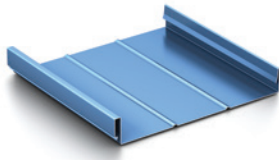
Bead



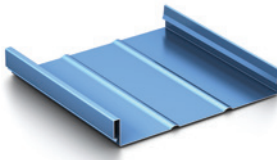
Small V



Large V



Small Pencil



Large Pencil

PRODUCT INFORMATION

FINISHES

Available in a wide variety of coatings and colors. See the Drexel Metals color charts for standard colors and paint specifications.

PANEL RIB

Factory made or field rolled to exact lengths options

- Flat Panel
- Bead
- Clip Relief
- Small and Large V
- Striations
- Small and Large Pencil

INSTALLATION

Can be installed over plywood decking with approved underlayments. Please see Drexel Metals installation details for complete information.

SLOPE

Minimum slope 2:12

TESTING

- UL 580 Wind Uplift (Class 90)
- TAS 125 Wind Uplift
- UL 1897 Extended Phase Wind Uplift
- UL 2218 Class 4 Hail Impact
- UL 790 Class A Fire Rating
- UL Environmental - SRI Third Party Verified
- UL 263 Fire Certification
- TAS 125 Wind Uplift
- ASTM E1646 Water Infiltration
- TAS 100 Wind Driven Rain
- ASTM E1680 Air Infiltration
- ASTM E1886 Missile Impact
- Miami-Dade County Approved
- Florida Building Code Approved
- Texas Department of Insurance Approval

Testing in accordance with



WARRANTY

35 YEAR WARRANTY - GALVALUME AND ALUMINUM SUBSTRATES

35 year non Pro-rated PVDF Paint Warranty

High-performance painted metal roofing product, carefully tensioned leveled for superior flatness.

25 YEAR WARRANTY - DREXLUME SUBSTRATE

Mill finished Galvalume with a two-sided, clear acrylic finish.

SHERWIN-WILLIAMS.
Coil Coatings

CORPORATE HEADQUARTERS: 1234 GARDINER LANE, LOUISVILLE, KY 40213 | 888-321-9630 TOLL-FREE | 502-690-6174 FAX | DREXELMETALS.COM

©2023 Drexel Metals, Inc. All rights reserved. Galvalume® is a registered trademark of BEIC International, Inc. Sherwin-Williams® Coil Coatings is trademark of The Sherwin-Williams Company. Drexlume™ is a trademark of Drexel Metals, Inc. Colors shown represent the actual color as closely as possible. To ensure exact color for final approval, a metal color chip is available. Warranty statements mentioned are outlines; complete Limited Warranty information is available on request. No other warranty expressed or implied is applicable. Please call or visit drexelmetals.com or residentialmetalroof.com for more details.