

DMC 150SL Profile

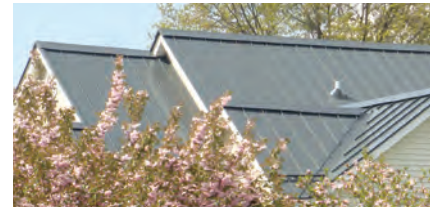
Installation ease with impeccable results makes our DMC 150SL roof system a standout choice. The 1-1/2" Snap Lock profile and DMC 150SL Clip create a continuous interlocking system that installs quickly, reducing labor costs. The concealed fastener and clip application also allow thermal expansion and contraction movement to help keep the beautiful finish straight and true.



Ideal Application:

Commercial

Residential

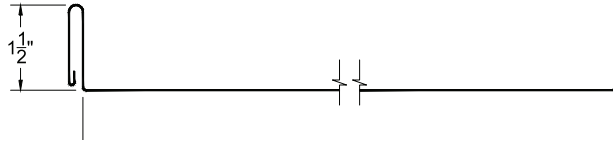


DMC 150SL Profile

Available widths:

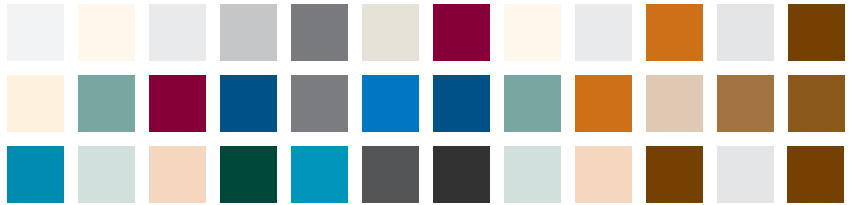
16"*

*Drexel Metals design pressures, wind uplifts and test reports are for specific deck attachments, material gauges, clip spacing and panel widths. A complete specification and listing is available online at www.drexelmetals.com



Substrates available:

- Galvalume® – 24ga
- Drexlume® – 24ga



Finishes and product warranty:

Available in a variety of coatings and colors by AkzoNobel. See the Drexel Metals color card for standard colors and paint specifications.



Galvalume® Substrate:
High-performance painted metal roofing product, carefully tensioned leveled for superior flatness.

35 YEAR WARRANTY
35-Year Non Pro-rated PVDF Paint Warranty

Drexlume® Substrate:
Mill finished Galvalume® with a two-sided, clear acrylic finish.

25 YEAR WARRANTY
25-Year Non Pro-rated Drexlume Warranty (Acrylic Coated Galvalume)

Production options:

Factory made or field rolled to exact lengths
Optional: striation, beads, pencil ribs

Installation:

Can be installed over plywood decking and Drexel Metals MetShield® underlayment.



MetShield
Underlayment

Slope:

Minimum slope 3:12



Minimum Roof Pitch:
3:12 – low roof pitch

Testing:

In accordance with:



- UL 580 Wind Uplift (Class 90)
- UL 2218 Class 4 Hail Impact
- UL 263 Fire Certification
- UL 790 Class A Fire Rating
- UL Environmental – SRI Third-Party Verified
- Florida Building Code Approved

Drexel Metals
Roofing Systems + Custom Fabrication



www.drexelmetals.com

1234 Gardiner Lane, Louisville, KY 40213
888-321-9630 toll-free • 502-690-6174 fax

